

LED PIR FLOODLIGHT INSTRUCTION

Luminaire Category: LED Floodlight
 Input voltage: AC220-240V 50HZ/60HZ
 Ambient Temperature: $-20^{\circ}\text{C} < \text{TA} < 45^{\circ}\text{C}$
 Protection Grade: IP44

Detection Range: 120°
 Ambient Light: 3-2000LUX (adjustable)
 Time-Delay: min: 10sec±3sec max:
 8min±3min (adjustable)

Installation Height: 1.8m~2.5m
 Detection Distance: max: 8m ($< 24^{\circ}\text{C}$)
 (adjustable)



BEFORE YOU BEGIN
 Read these instructions carefully



WARNING

1. ENSURE ELECTRICITY IS SWITCHED OFF BEFORE INSTALL .
2. Please read through all following instructions before installing the unit.
3. User should prepare necessary accessories and spare parts (not provided) including junction box .
4. The Floodlight must be earthed.
5. In the case of damage the safety shield, you must replace immediately-with tempered glass.
6. Method of attachment of the cable or cord such that any replacement can only be made by the manufacturer, his service agent or similarly qualified person.

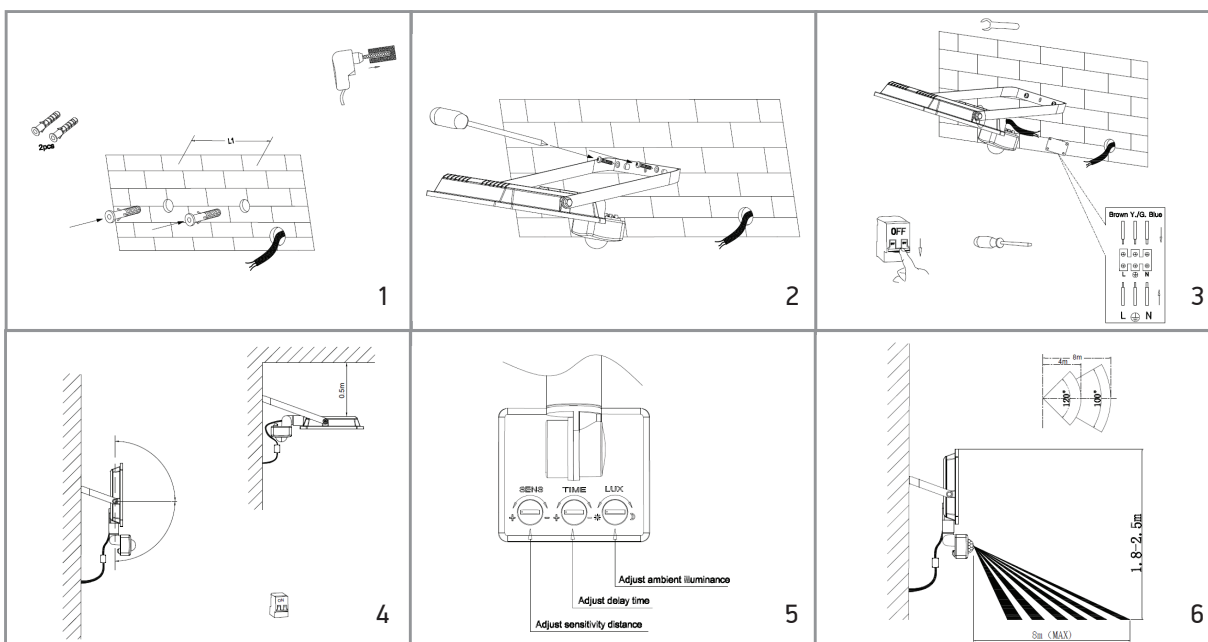


MOUNTING

1. Do not mount a surface prone to vibrations.
2. Drill the wall at the marked positions(screw not supplied). (see fig.1)
3. Screw the fixing bracket to the wall with suitable screw(see fig.2)
4. Connect your mains cable(H05RN-F3G1.0mm² Recommended) with the input lead of our product through the waterproof junction box. Note the Line(-) of the lead. (see fig.3) (Need to use the junction box of IP65 or above, ensure to tighten the waterproof screw)
5. Open the power to make sure if the product can be lighten. Adjust the irradiation angle according to the condition of usage. (see fig.4)
6. How to set up the adjustment .(see fig5/6)

CODES: 961-004, 961-005, 961-006, 961-010, 961-011, 961-012, 961-016, 961-017, 961-018, 961-022, 961-023, 961-024, 961-028, 961-029, 961-030, 961-034, 961-035, 961-036, 961-040, 961-041, 961-042, 961-046, 961-047, 961-048, 961-052, 961-053, 961-054, 961-058, 961-059, 961-060

Please operate it strictly according to the instruction, otherwise the consequence is proud.



WARNING Do not open the product on your own. It loses the Warranty.
 The product can only be opened from the manufacturer.

